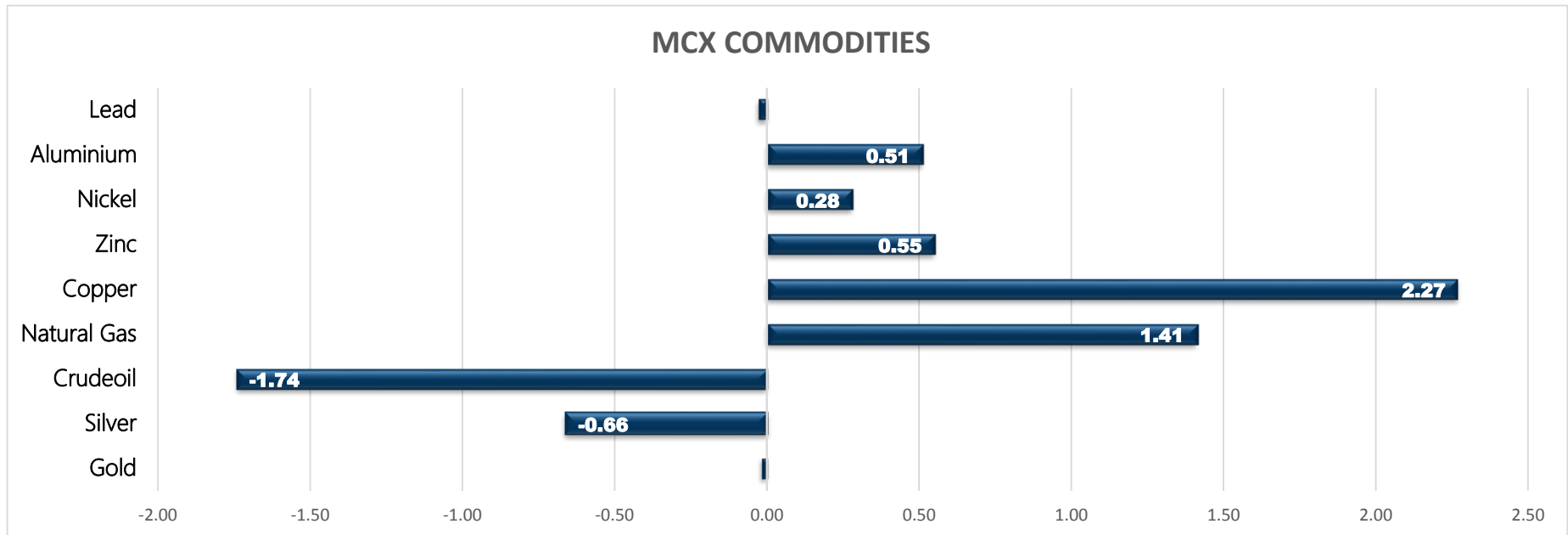


Commodity	Closed	% Change
Gold	47158.00	-0.02
Silver	61721.00	-0.66
Crudeoil	4640.00	-1.74
Natural Gas	288.50	1.41
Copper	699.95	2.27
Zinc	246.20	0.55
Nickel	1402.40	0.28
Aluminium	205.80	0.51
Lead	179.10	-0.03

Commodity	Ltp*	% Change
Gold\$	1786.59	0.31
Silver\$	23.20	0.81
Crudeoil\$	63.50	-2.62
Natural Gas\$	3.83	-0.57
Lme Copper	9140.50	0.98
Lme Zinc	2955.50	0.77
Lme Nickel	18975.00	2.99
Lme Lead	2295.00	1.50
Lme Aluminium	2599.50	1.74

Economical Data	
EUR	French Flash Manufacturing PMI
EUR	French Flash Services PMI
EUR	German Flash Manufacturing PMI
EUR	German Flash Services PMI
EUR	Flash Manufacturing PMI
EUR	Flash Services PMI
EUR	German Buba Monthly Report
USD	Flash Manufacturing PMI
USD	Flash Services PMI

MCX COMMODITIES



**MCX MARKET SYNOPSIS**

Contract	Open	High	Low	Close	Rs Chg	% Chg	Volume	OI	OI % Chg
Gold Oct	47250.00	47377.00	47065.00	47158.00	-11.00	-0.02	5259	12045	-1.59
Gold Dec	47381.00	47545.00	47274.00	47306.00	-28.00	-0.06	427	2139	12.58

Contract	Open	High	Low	Close	Rs Chg	% Chg	Volume	OI	OI % Chg
Silver Sep	62185.00	62320.00	61227.00	61721.00	-412.00	-0.66	11586	10214	-3.20
Silver Dec	62966.00	63104.00	62010.00	62475.00	-442.00	-0.70	1925	6316	10.03

**MCX PIVOT**

Contract	Sup - 3	Sup - 2	Sup - 1	Pivot	Res - 1	Res - 2	Res - 3	OI Status
Gold Oct	46711.00	46888.00	47023.00	47200.00	47335.00	47512.00	47647.00	Long Liquidation
Silver Sep	60099.00	60663.00	61192.00	61756.00	62285.00	62849.00	63378.00	Long Liquidation

**SPREAD SYNOPSIS**

Gold					Silver					Spread History			
Month	Rate	Oct	Dec	Feb	Month	Rate	Sep	Dec	Mar	Commodity	Max	Min	Avg
Oct	47158		148.00	306.00	Sep	61721		754.00	1508.00	Gold	585.00	-358.00	186.00
Dec	47306			158.00	Dec	62475			754.00	Silver	2862.00	588.00	1297.00
Feb	47464				Mar	63229							

**INTERNATIONAL MARKET SYNOPSIS**

Gold Last 4 Day Movement								Pivot		
Date	Open	High	Low	Close	Chg	% Chg		Res - 1	Res - 2	Res - 3
19-Aug-21	1787.26	1790.85	1775.78	1779.79	-7.43	-0.42%		1788.50	1797.21	1803.57
18-Aug-21	1785.88	1793.35	1778.64	1787.22	1.35	0.08%		Sup - 1	Sup - 2	Sup - 3
17-Aug-21	1786.98	1794.94	1781.07	1785.87	-1.09	-0.06%		1773.43	1767.07	1758.36
16-Aug-21	1779.31	1788.63	1771.17	1786.96	7.63	0.43%				

Silver Last 4 Day Movement								Pivot		
Date	Open	High	Low	Close	Chg	% Chg		Res - 1	Res - 2	Res - 3
19-Aug-21	23.492	23.513	23.142	23.228	-0.263	-1.12%		23.45	23.67	23.82
18-Aug-21	23.646	23.804	23.311	23.491	-0.154	-0.65%		Sup - 1	Sup - 2	Sup - 3
17-Aug-21	23.831	23.922	23.579	23.645	-0.186	-0.78%		23.08	22.92	22.70
16-Aug-21	23.718	23.882	23.437	23.831	0.113	0.48%				

GOLD

Gold trading range for the day is 46888-47512.

Gold held steady amid growing concerns over a global economic slowdown due to a spike in COVID-19 infections underpinned the safe-haven metal.

Worries over a slowing economic recovery and possible tapering from the Federal Reserve dented appetite for riskier assets.

Physical gold demand moderated in top hubs as a rebound in domestic prices and a seasonal lull slowed market activity.

Jewellers across the country have planned to go on a strike on Aug. 23 to oppose a government move to make hallmarking of gold jewellery



SILVER

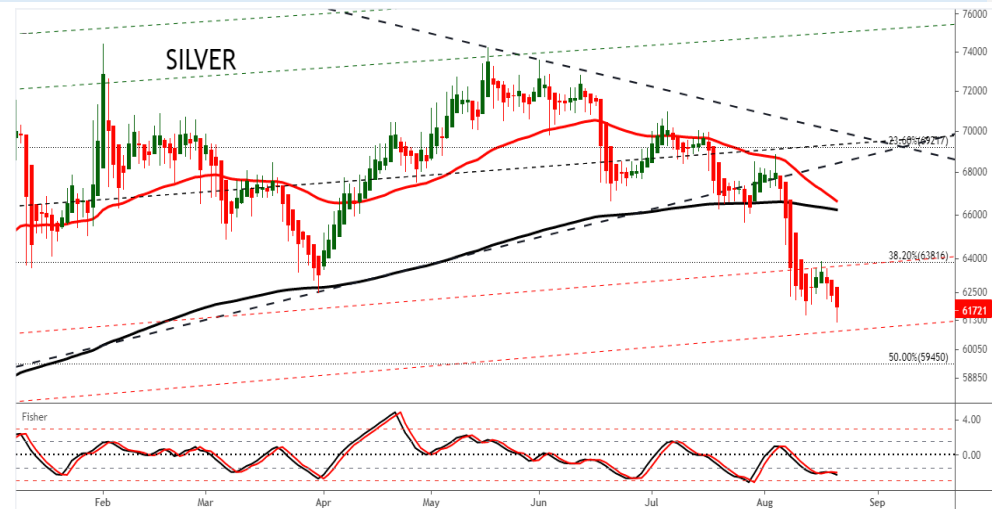
Silver trading range for the day is 60663-62849.

Silver dropped as dollar strengthened as China's crackdown on the once high-flying technology firms and Fed's tighter monetary measures.

Further downside limited as global risk appetite remained checked by concerns over a slowdown in the global economic recovery

Fed Chair Powell will speak on "the economic outlook" at next week's Jackson Hole, Wyoming symposium, the central bank said.

Fed's Minutes suggest policymakers are coalescing around beginning to taper their \$120 billion in monthly asset purchases before the end of the year.



**BULLION SPOT MARKET SYNOPSIS**

Gold Spot 995		
Exch.	Descr.	Ltp*
CMDTY	Gold 995 - Ahmedabad	48610.00
CMDTY	Gold 995 - Bangalore	48560.00
CMDTY	Gold 995 - Chennai	48610.00
CMDTY	Gold 995 - Cochin	48615.00
CMDTY	Gold 995 - Delhi	48620.00
CMDTY	Gold 995 - Hyderabad	48540.00
CMDTY	Gold 995 - Jaipur	48570.00
CMDTY	Gold 995 - Kolkata	48650.00
CMDTY	Gold 995 - Mumbai	48700.00

\* Rates including GST

Gold Spot 999		
Exch.	Descr.	Ltp*
CMDTY	Gold 999 - Ahmedabad	48740.00
CMDTY	Gold 999 - Bangalore	48710.00
CMDTY	Gold 999 - Chennai	48760.00
CMDTY	Gold 999 - Cochin	48765.00
CMDTY	Gold 999 - Delhi	48770.00
CMDTY	Gold 999 - Hyderabad	48690.00
CMDTY	Gold 999 - Jaipur	48690.00
CMDTY	Gold 999 - Mumbai	48850.00

\* Rates including GST

Silver Spot 999		
Exch.	Descr.	Ltp*
CMDTY	Silver 999 - Ahmedabad	63900.00
CMDTY	Silver 999 - Bangalore	64010.00
CMDTY	Silver 999 - Chennai	63950.00
CMDTY	Silver 999 - Delhi	63955.00
CMDTY	Silver 999 - Hyderabad	64075.00
CMDTY	Silver 999 - Jaipur	63850.00
CMDTY	Silver 999 - Kolkata	64150.00
CMDTY	Silver 999 - Mumbai	64095.00

\* Rates including GST

Gold and Silver Fix		
Exch.	Descr.	Ltp*
CMDTY	Gold London AM FIX	1788.20
CMDTY	Gold London PM FIX	1782.05
CMDTY	Silver London FIX	23.34

Gold and Silver Ratio		
Exch.	Descr.	Ltp*
Intl Spot	GOLD SILVER RATIO	77.02
MCX	GOLD SILVER RATIO	76.41

Bullion Futures on DGCX		
Exch.	Descr.	Ltp*
DGCX	GOLD 28SEP2021	1782.20
DGCX	GOLD 26NOV2021	1789.00
DGCX	GOLD QUANTO 24SEP2021	47178.00
DGCX	GOLD QUANTO 25NOV2021	47152.00
DGCX	SILVER 27AUG2021	23.33
DGCX	SILVER 26NOV2021	23.43

SPOT Vs MCX SPREAD			
Silver 999	Spread	Gold 999	Spread
Ahmedabad - Mcx Silver	2179.00	Ahmedabad - Mcx Gold	1582.00
Bangalore - Mcx Silver	2289.00	Bangalore - Mcx Gold	1552.00
Chennai - Mcx Silver	2229.00	Chennai - Mcx Gold	1602.00
Delhi - Mcx Silver	2234.00	Cochin - Mcx Gold	1607.00
Hyderabad - Mcx Silver	2354.00	Delhi - Mcx Gold	1612.00
Jaipur - Mcx Silver	2129.00	Hyderabad - Mcx Gold	1532.00
Kolkata - Mcx Silver	2429.00	Jaipur - Mcx Gold	1532.00
Mumbai - Mcx Silver	2374.00	Mumbai - Mcx Gold	1692.00

GOLD PRICE MOVEMENT SINCE 2012

Year	JAN	FEB	MAR	APR	MAY	JUN	JUL	AUG	SEP	OCT	NOV	DEC	Grow th
2012	28078	27952	28518	29283	29248	29665	29749	31206	31535	31105	31076	30859	3530.00
	2.74	-0.45	2.02	2.68	-0.12	1.43	0.28	4.90	1.05	-1.36	-0.09	-0.70	12.92
2013	29871	29570	29394	26905	26874	25669	28207	35074	29874	29793	29234	28364	-2495.00
	-3.20	-1.01	-0.60	-8.47	-0.12	-4.48	9.89	24.35	-14.83	-0.27	-1.88	-2.98	-8.09
2014	29462	30090	28536	28887	26863	27776	27818	27996	26313	25881	25835	26703	-1661.00
	3.87	2.13	-5.16	1.23	-7.01	3.40	0.15	0.64	-6.01	-1.64	-0.18	3.36	-5.86
2015	27895	26477	26204	26716	26860	26471	24813	26682	25856	26499	25069	24931	-1772.00
	4.46	-5.08	-1.03	1.95	0.54	-1.45	-6.26	7.53	-3.10	2.49	-5.40	-0.55	-6.64
2016	26638	29513	28549	30266	28627	31199	31549	30724	30742	29950	28385	27445	2514.00
	6.85	10.79	-3.27	6.01	-5.42	8.98	1.12	-2.61	0.06	-2.58	-5.23	-3.31	10.08
2017	28942	29566	28463	28873	28843	28439	28557	29745	29557	29253	29012	29000	1555.00
	5.45	2.16	-3.73	1.44	-0.10	-1.40	0.41	4.16	-0.63	-1.03	-0.82	-0.04	5.67
2018	30117	30379	30408	31036	30831	30432	29653	30129	30481	31748	30240	31392	2392.00
	3.85	0.87	0.10	2.07	-0.66	-1.29	-2.56	1.61	1.17	4.16	-4.75	3.81	8.25
2019	33096	33286	31998	31756	32266	34206	35420	38805	37323	38578	38031	39208	7816.00
	5.43	0.57	-3.87	-0.76	1.61	6.01	3.55	9.56	-3.82	3.36	-1.42	3.09	24.90
2020	41000	41397	43000	44906	46654	48762	53445	51701	50334	50699	47918	50151	10943.00
	4.57	0.97	3.87	4.43	3.89	4.52	9.60	-3.26	-2.64	0.73	-5.49	4.66	27.91
2021	49096	45736	44935	46737	49349	46839	48001						-2150.00
	-2.10	-6.84	-1.75	4.01	5.59	-5.09	2.48						-4.29
Average	2.09	1.06	-1.45	2.50	0.32	0.90	1.56	6.59	-3.11	1.19	-1.39	0.21	Average

SILVER PRICE MOVEMENT SINCE 2012

Year	JAN	FEB	MAR	APR	MAY	JUN	JUL	AUG	SEP	OCT	NOV	DEC	Growth
2012	56422	57783	56790	56482	54110	51987	53974	58408	62780	59881	61185	57864	6835.00
	10.57	2.41	-1.72	-0.54	-4.20	-3.92	3.82	8.22	7.49	-4.62	2.18	-5.43	13.39
2013	57849	53267	53072	44833	43616	40208	41520	53212	49248	48431	44274	43833	-14031.00
	-0.03	-7.92	-0.37	-15.52	-2.71	-7.81	3.26	28.16	-7.45	-1.66	-8.58	-1.00	-24.25
2014	43309	46362	42805	41329	40851	44114	44399	42255	38516	35797	34527	35990	-7843.00
	-1.20	7.05	-7.67	-3.45	-1.16	7.99	0.65	-4.83	-8.85	-7.06	-3.55	4.24	-17.89
2015	38105	36716	37169	36415	38349	35536	34025	34581	34547	36490	33480	33299	-2691.00
	5.88	-3.65	1.23	-2.03	5.31	-7.34	-4.25	1.63	-0.10	5.62	-8.25	-0.54	-7.48
2016	34750	36081	36751	41566	38400	43467	47480	43988	45726	42402	40089	39485	6186.00
	4.36	3.83	1.86	13.10	-7.62	13.20	9.23	-7.35	3.95	-7.27	-5.45	-1.51	18.58
2017	41921	43247	42326	39503	40096	38344	38645	39798	39457	38818	37532	39000	-485.00
	6.17	3.16	-2.13	-6.67	1.50	-4.37	0.78	2.98	-0.86	-1.62	-3.31	3.91	-1.23
2018	39319	38246	38322	38642	39904	39228	38321	37482	38577	38050	36025	38821	-179.00
	0.82	-2.73	0.20	0.84	3.27	-1.69	-2.31	-2.19	2.92	-1.37	-5.32	7.76	-0.46
2019	40439	39760	37761	37714	36449	37452	41227	46776	44119	46764	44506	46711	7890.00
	4.17	-1.68	-5.03	-0.12	-3.35	2.75	10.08	13.46	-5.68	6.00	-4.83	4.95	20.32
2020	46989	43979	39520	41390	50118	50364	64984	70437	59919	60865	60222	68105	21394.00
	0.60	-6.41	-10.14	4.73	21.09	0.49	29.03	8.39	-14.93	1.58	-1.06	13.09	45.80
2021	69706	67261	63814	68366	71898	69074	67847						-258.00
	2.35	-3.51	-5.12	7.13	5.17	-3.93	-1.78						-0.38
Average	1.95	0.49	-1.01	2.38	0.25	-1.30	5.07	5.94	-3.38	1.14	-2.17	2.26	Average

# GENERAL DISCLAIMERS

KEDIA ADVISORY

This Report is prepared and distributed by Kedia Stocks & Commodities Research Pvt Ltd. for information purposes only. The recommendations, if any, made herein are expression of views and/or opinions and should not be deemed or construed to be neither advice for the purpose of purchase or sale through KSCRPL nor any solicitation or offering of any investment /trading opportunity. These information / opinions / views are not meant to serve as a professional investment guide for the readers. No action is solicited based upon the information provided herein. Recipients of this Report should rely on information/data arising out of their own investigations. Readers are advised to seek independent professional advice and arrive at an informed trading/investment decision before executing any trades or making any investments. This Report has been prepared on the basis of publicly available information, internally developed data and other sources believed by KSCRPL to be reliable. KSCRPL or its directors, employees, affiliates or representatives do not assume any responsibility for, or warrant the accuracy, completeness, adequacy and reliability of such information / opinions / views. While due care has been taken to ensure that the disclosures and opinions given are fair and reasonable, none of the directors, employees, affiliates or representatives of KSCRPL shall be liable for any direct, indirect, special, incidental, consequential, punitive or exemplary damages, including lost profits arising in any way whatsoever from the information / opinions / views contained in this Report. The possession, circulation and/or distribution of this Report may be restricted or regulated in certain jurisdictions by appropriate laws. No action has been or will be taken by KSCRPL in any jurisdiction (other than India), where any action for such purpose(s) is required. Accordingly, this Report shall not be possessed, circulated and/ or distributed in any such country or jurisdiction unless such action is in compliance with all applicable laws and regulations of such country or jurisdiction. KSCRPL requires such recipient to inform himself about and to observe any restrictions at his own expense, without any liability to KSCRPL. Any dispute arising out of this Report shall be subject to the exclusive jurisdiction of the Courts in India.

For more details, please **contact:**

 +91 9323406035 / 9619551022

 [info@kediaadvisory.com](mailto:info@kediaadvisory.com)

 [www.kediaadvisory.com](http://www.kediaadvisory.com)

KEDIA STOCKS & COMMODITIES RESEARCH PVT LTD.  
Mumbai, IN.

SEBI REGISTRATION NUMBER - INH000006156

